



五星减速机
WUXING JIANSUJI

DC系列微型直流齿轮减速电机

泰兴市五星减速机有限公司

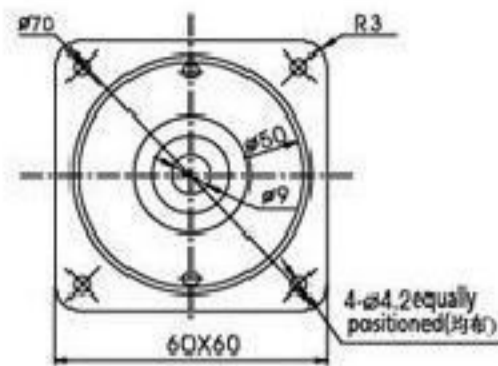
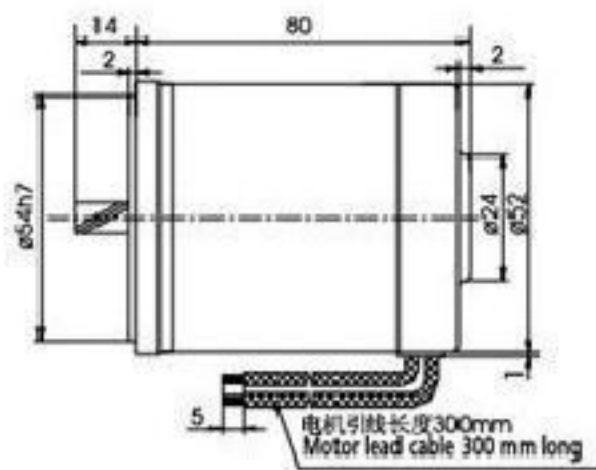
Taixing Five Star Reducer Co., Ltd.

地址：江苏省泰兴市姚王镇118号

24小时服务热线：13961848999



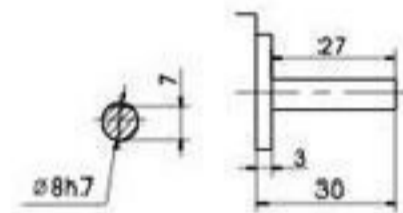
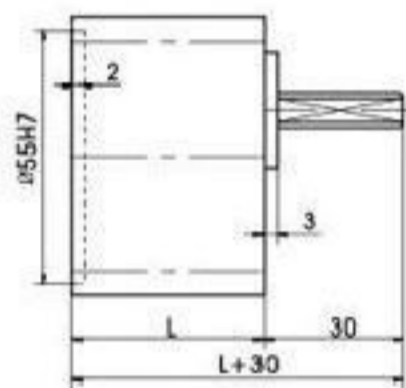
扫一扫加微信



电机性能参数 Motor Performance Parameters

型号 Model	电压 Voltage V	功率 Power W	空载参数No-load Parameters		负载参数Load Parameters			电刷寿命 Brush Life H	电机重量 Motor Weight kg	备注 Remarks
			转速Speed RPM	电流Current A	转速Speed RPM	力矩Torque kg.cm	电流Current A			
DC2GN6-12□	12	6	3200	0.6	2950	0.2	0.8	3000	0.6	
DC2GN6-24□	24	6	3200	0.3	2950	0.2	0.5	3000	0.6	
DC2GN6-90□	90	6	3000	0.2	2800	0.2	0.3	3000	0.6	
DC2GN10-12□	12	10	3200	1.0	2800	0.35	2.0	3000	0.7	
DC2GN10-24□	24	10	3300	0.5	3000	0.35	0.9	3000	0.7	
DC2GN10-90□	90	10	3200	0.3	2800	0.35	0.6	3000	0.7	

齿轮箱外形尺寸 Overall Dimension of Gearbox



齿轮箱输出轴详细尺寸
Detailed gearbox output shaft dimension

齿轮箱 Gearbox	速比Reduction Ratio	尺寸L(mm)	质量(kg)
2GN3K-GN18K		32	0.24
2GN20K-GN50K		42	0.30
2GN60K-GN200K			0.33

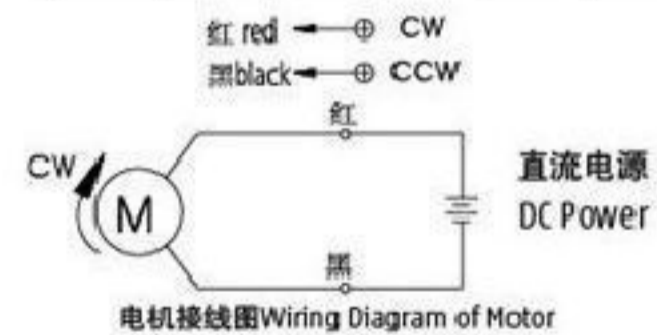
齿轮箱允许力矩 Allowable Torque on Gearbox

齿轮箱型式 Model of Gearbox: 2GN□K

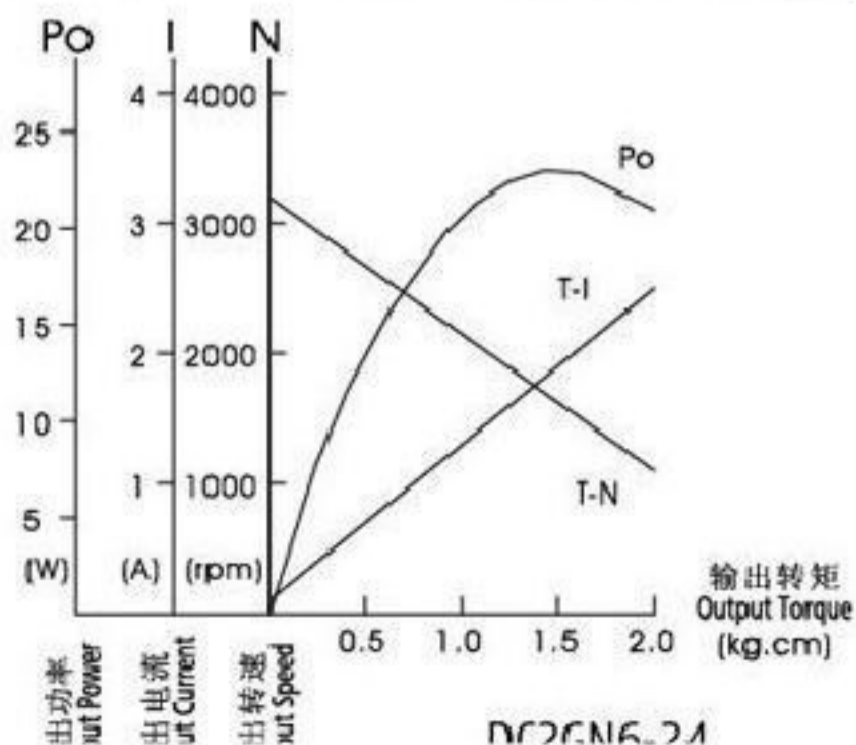
型号 Mode	速比 Reduction Ratio		3	3.6	5	6	7.5	9	10	12.5	15	18	20	25	30	36	40	50
DC2GN6-24□ DC2GN10-24□	输出轴转速 Output Shaft Speed	r/min	1067	889	640	533	427	356	320	256	213	178	160	128	107	89	80	64
	允许力矩 Allowable Torque	N.m	0.04	0.05	0.07	0.09	0.11	0.13	0.15	0.18	0.22	0.26	0.26	0.33	0.39	0.47	0.52	0.65
		kgf.cm	0.44	0.53	0.74	0.89	1.11	1.33	1.48	1.85	2.22	2.66	2.68	3.33	4.00	4.80	5.34	6.67

齿轮箱型式 Model of Gearbox: 2GN□K

型号 Mode	速比 Reduction Ratio		75	90	100	120	150	180	200
DC2GN6-24□ DC2GN10-24□	输出轴转速 Output Shaft Speed	r/min	43	36	32	27	21	18	16
	允许力矩 Allowable Torque	N.m	0.89	1.06	1.18	1.42	1.77	2.13	2.36
		kgf.cm	9.04	10.85	12.06	14.47	18.09	21.71	24.12

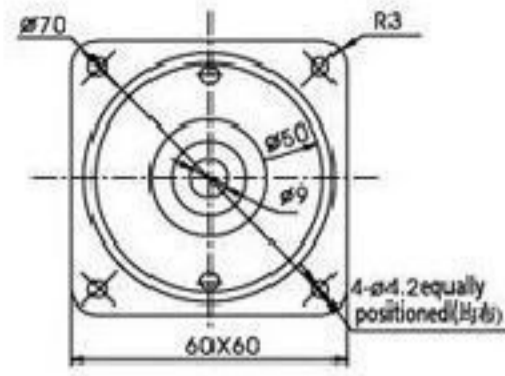
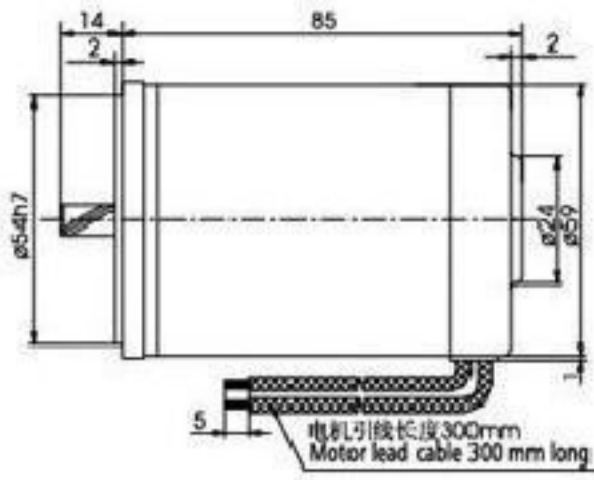


电机特性曲线 Characteristic Curve of Motor



光电机出轴尺寸 Bare Motor Output Shaft Dimension

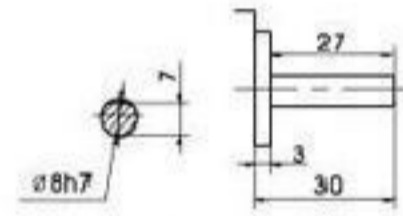
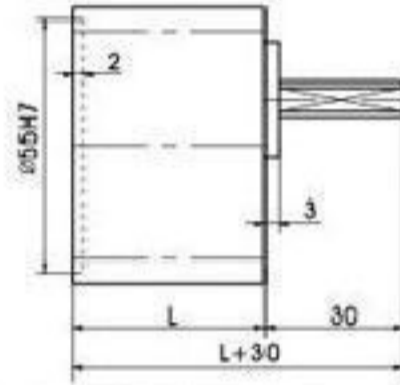
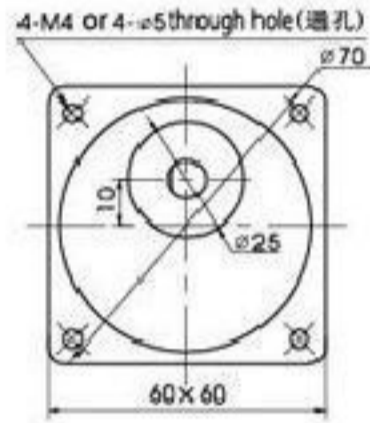
光电机 Motor	齿轴 Gear Shaft DC2GN6-□ DC2GN10-□	铁扁 Flat type DC2A6-□ DC2A10-□
出轴型式 及尺寸 Output Shaft Type and Dimension		



电机性能参数 Motor Performance Parameters

型号 Model	电压 Voltage V	功率 Power W	空载参数No-load Parameters		负载参数Load Parameters			电刷寿命 Brush Life H	电机重量 Motor Weight kg	备注 Remarks
			转速Speed	电流Current	转速Speed	力矩Torque	电流Current			
			RPM	A	RPM	kg.cm	A			
DC2GN15-12□	12	15	3200	0.8	2950	0.5	2.0	3000	0.9	
DC2GN15-24□	24	15	3300	0.4	3000	0.5	1.0	3000	0.9	
DC2GN15-90□	90	15	3200	0.2	3000	0.5	0.4	3000	0.9	

齿轮箱外形尺寸 Overall Dimension of Gearbox



齿轮箱输出轴详细尺寸
Detailed gearbox output shaft dimension

齿轮箱 Gearbox	速比Reduction Ratio	尺寸L(mm)	质量(kg)
2GN3K-GN18K	3	32	0.24
	3.6	32	0.24
	5	32	0.24
2GN20K-GN50K	6	42	0.30
	7.5	42	0.30
	9	42	0.30
2GN60K-GN200K	10	42	0.33
	12.5	42	0.33
	15	42	0.33

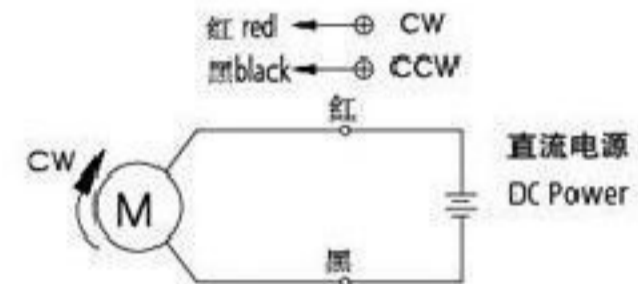
齿轮箱允许力矩 Allowable Torque on Gearbox

齿轮箱型式 Model of Gearbox: 2GN□K

型号Mode	减速比Reduction Ratio		3	3.6	5	6	7.5	9	10	12.5	15	18	20	25	30	36	40	50	60
DC2GN15-24□	输出轴转速 Output Shaft Speed	r/min	1100	917	660	550	440	367	330	264	220	183	165	132	110	92	83	66	55
	允许力矩 Allowable Torque	N.m	0.11	0.13	0.176	0.21	0.26	0.32	0.35	0.44	0.53	0.63	0.63	0.73	0.95	1.14	1.27	1.59	1.72
		kgf.cm	1.08	1.29	1.79	2.15	2.69	3.23	3.59	4.48	5.38	6.46	6.47	8.08	9.70	11.64	12.93	16.17	17.54

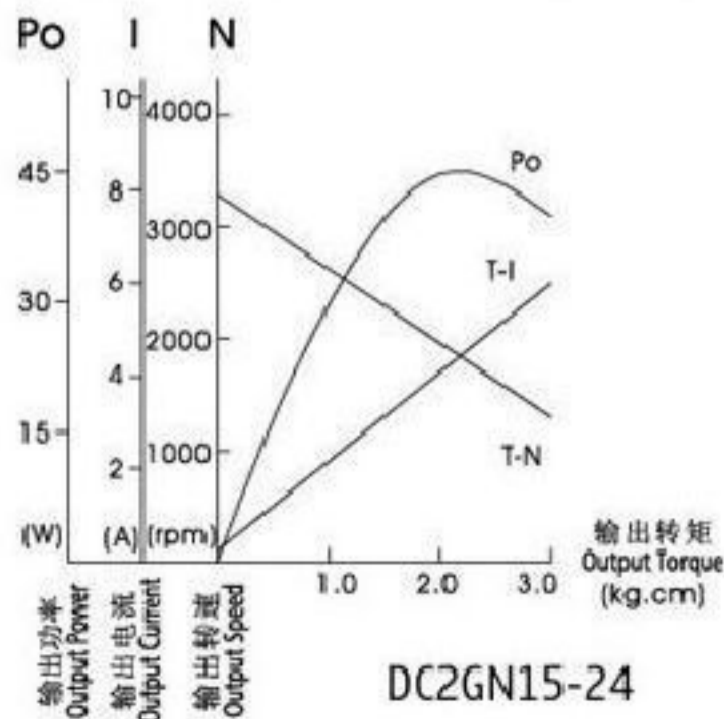
齿轮箱型式 Model of Gearbox: 2GN□K

型号Mode	减速比Reduction Ratio		75	90	100	120	150	180	200
DC2GN15-24□	输出轴转速 Output Shaft Speed	r/min	44	37	33	28	22	18	17
	允许力矩 Allowable Torque	N.m	2.15	2.58	2.87	2.94	2.94	2.94	2.94
		kgf.cm	21.93	26.31	29.23	30.0	30.0	30.0	30.0

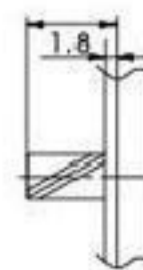
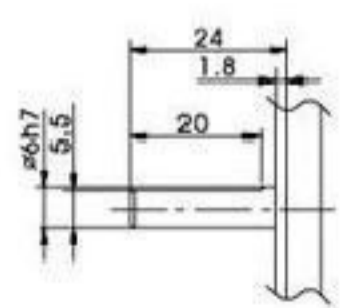


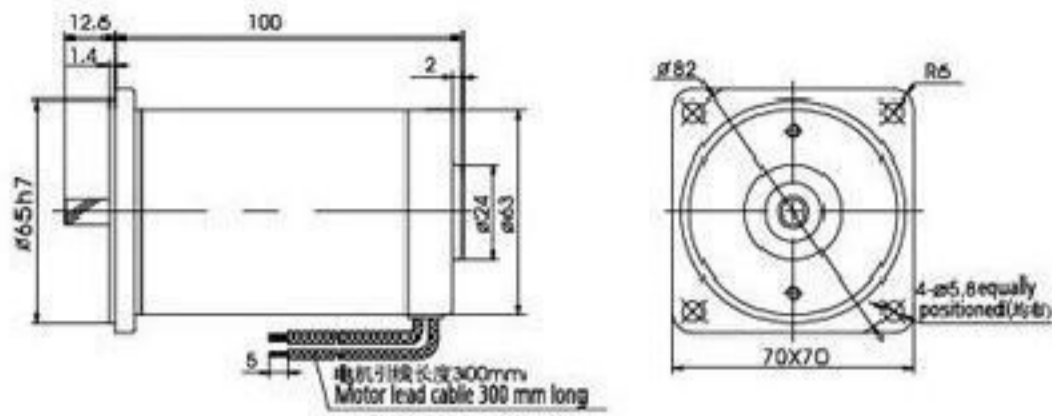
电机接线图 Wiring Diagram of Motor

电机特性曲线 Characteristic Curve of Motor



光电机出轴尺寸 Bare Motor Output Shaft Dimension

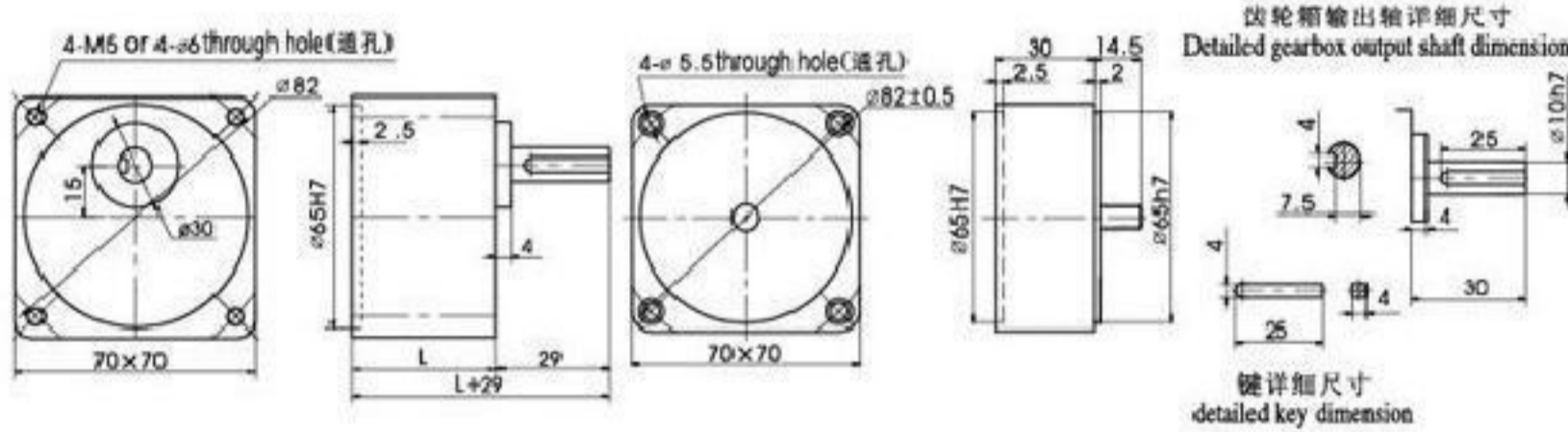
光电机 Motor	齿轴Gear Shaft DC2GN15-□	铣扁Flat type DC2A15-□
出轴型式 及尺寸 Output Shaft Type and Dimension		



电机性能参数 Motor Performance Parameters

型号 Model	电压 Voltage V	功率 Power W	空载参数No-load Parameters		负载参数Load Parameters			电刷寿命 Brush Life H	电机重量 Motor Weight kg	备注 Remarks
			转速Speed RPM	电流Current A	转速Speed RPM	力矩Torque kg.cm	电流Current A			
DC3GN20-90□	90	20	3150	0.2	2800	0.70	0.50	3000	1.0	
DC3GN25-12□	12	25	3300	1.0	3000	0.80	3.50	3000	1.0	
DC3GN25-24□	24	25	3200	0.5	2800	0.87	1.60	3000	1.0	

齿轮箱外形尺寸 Overall Dimension of Gearbox



	速比Reduction Ratio	尺寸L(mm)	质量(kg)
齿轮箱 Gearbox	3GN3K-GN15K	32	0.38
	3GN18K-GN50K	42	0.47
	3GN60K-GN200K		0.52
中间齿轮箱 Intermediate Gearbox	3GN10X	30	0.38
电机Motor			1.04

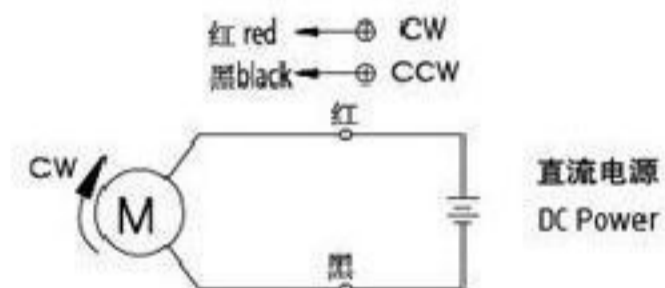
齿轮箱允许力矩 Allowable Torque on Gearbox

齿轮箱型式Model of Gearbox: 3GN□K

型号Mode	减速比Reduction Ratio		3	3.6	5	6	7.5	9	10	12.5	15	18	20	25	30	36	40	50
DC3GN25-24□	输出轴转速 Output Shaft Speed	r/min	1067	889	640	533	427	356	320	256	213	178	160	128	107	89	80	64
	允许力矩 Allowable Torque	N.m	0.21	0.25	0.34	0.41	0.52	0.62	0.69	0.86	1.03	1.24	1.24	1.56	1.87	2.24	2.49	3.11
		kgf.cm	2.1	2.6	3.5	4.2	5.3	6.3	7.0	8.8	10.5	12.6	12.6	15.9	19.1	22.8	25.4	31.7

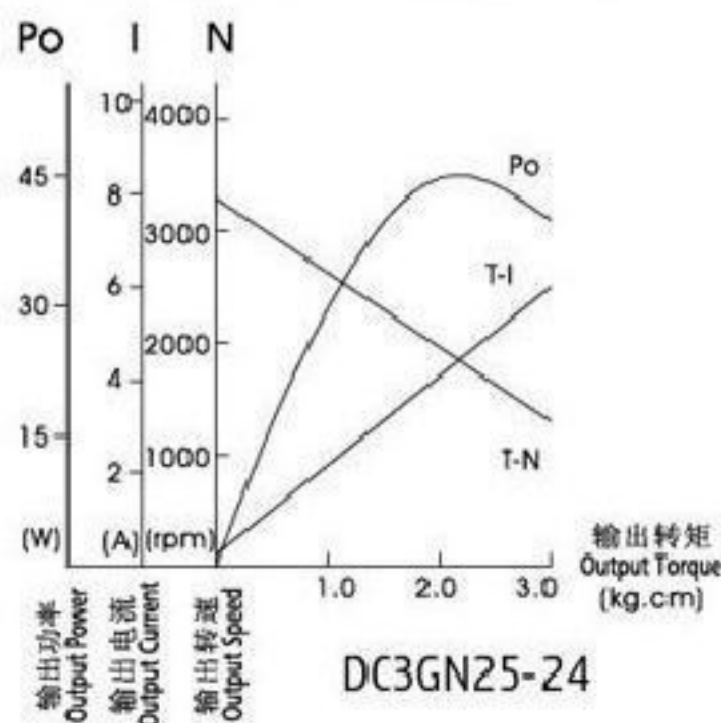
齿轮箱型式Model of Gearbox: 2GN□K

型号Mode	减速比Reduction Ratio		60	75	90	100	120	150	180	200
DC3GN25-24□	输出轴转速 Output Shaft Speed	r/min	53	43	36	32	27	21	18	16
	允许力矩 Allowable Torque	N.m	3.38	4.22	4.90	4.90	4.90	4.90	4.90	4.90
		kgf.cm	34.5	43.1	50	50	50	50	50	50

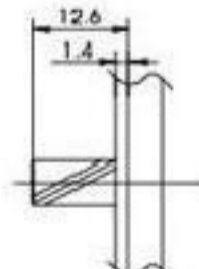
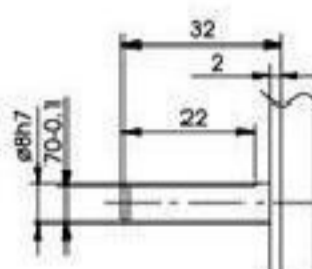


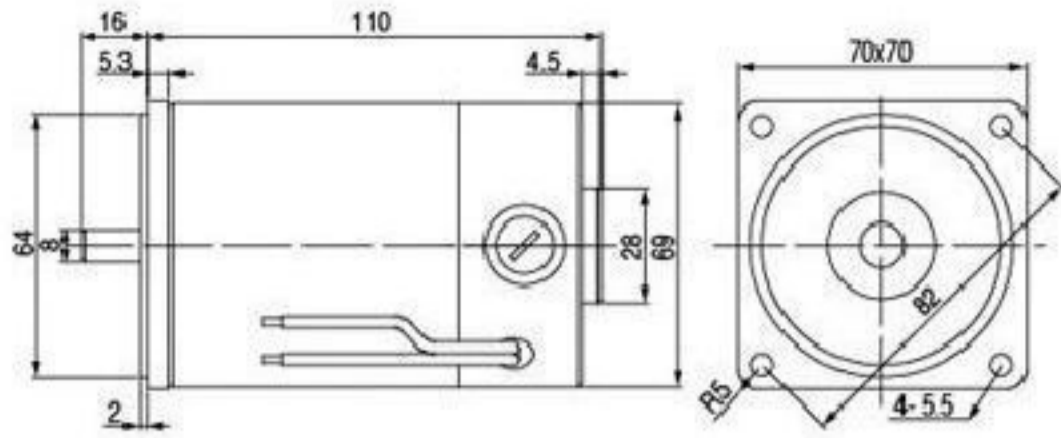
电机接线图Wiring Diagram of Motor

电机特性曲线 Characteristic Curve of Motor



光电机出轴尺寸 Bare Motor Output Shaft Dimension

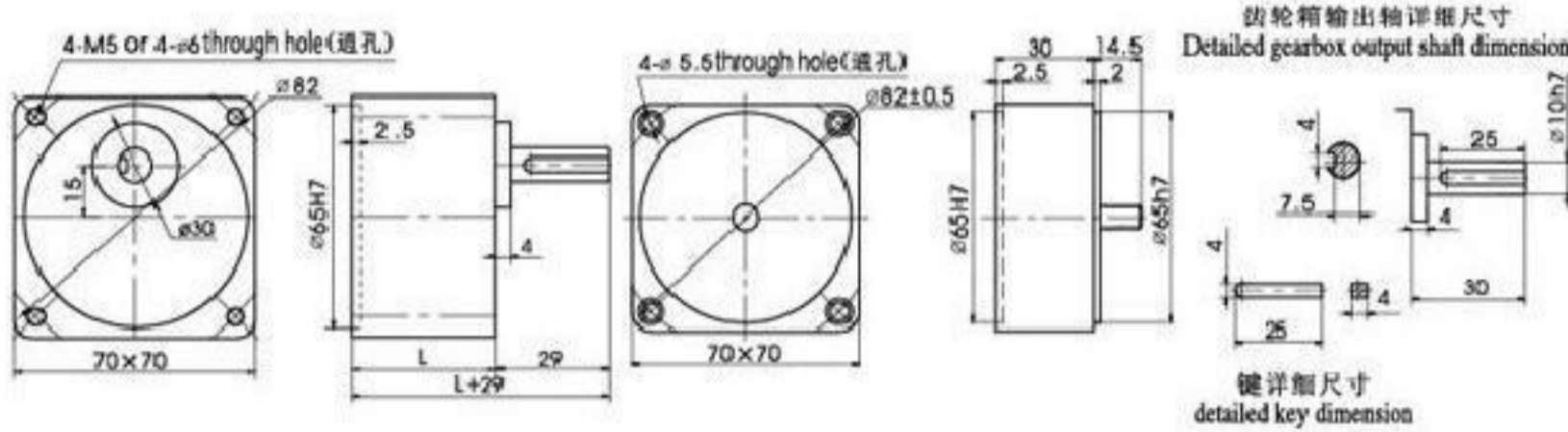
光电机 Motor	齿轴Gear Shaft DC3GN20-□ DC3GN25-□	铁扁Flat type DC3A20-□ DC3A25-□
出轴型式 及尺寸 Output Shaft Type and Dimension		



电机性能参数 Motor Performance Parameters

型号 Model	电压 Voltage V	功率 Power W	空载参数 No-load Parameters		负载参数 Load Parameters			电刷寿命 Brush Life H	电机重量 Motor Weight kg	备注 Remarks
			转速 Speed RPM	电流 Current A	转速 Speed RPM	力矩 Torque kg.cm	电流 Current A			
DC3GN30-90□	90	30	3150	0.3	2800	0.90	0.60	3000	1.2	
DC3GN30-12□	12	30	3300	1.2	3000	1.00	3.70	3000	1.2	
DC3GN30-24□	24	30	3200	0.8	2800	1.10	1.80	3000	1.2	

齿轮箱外形尺寸 Overall Dimension of Gearbox



	速比 Reduction Ratio	尺寸 L (mm)	质量 (kg)
齿轮箱 Gearbox	3GN3K-GN15K	32	0.38
	3GN18K-GN50K	42	0.47
	3GN60K-GN200K		0.52
中间齿轮箱 Intermediate Gearbox	3GN10X	30	0.38
电机 Motor			1.04

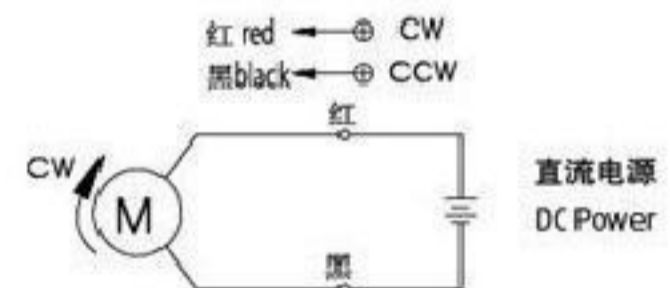
齿轮箱允许力矩 Allowable Torque on Gearbox

齿轮箱型式 Model of Gearbox: 3GN□K

型号 Mode	减速比 Reduction Ratio		3	3.6	5	6	7.5	9	10	12.5	15	18	20	25	30	36	40	50
DC3GN30-24□	输出轴转速 Output Shaft Speed	r/min	1067	889	640	533	427	356	320	256	213	178	160	128	107	89	80	64
	允许力矩 Allowable Torque	N.m	0.27	0.32	0.45	0.54	0.67	0.81	0.90	1.12	1.35	1.62	1.80	2.25	2.70	3.24	3.60	4.00
		kgf.cm	2.7	3.2	4.6	5.5	6.8	8.3	9.1	11.4	13.5	16.5	18.4	22.9	27.5	33.1	36.7	40.8

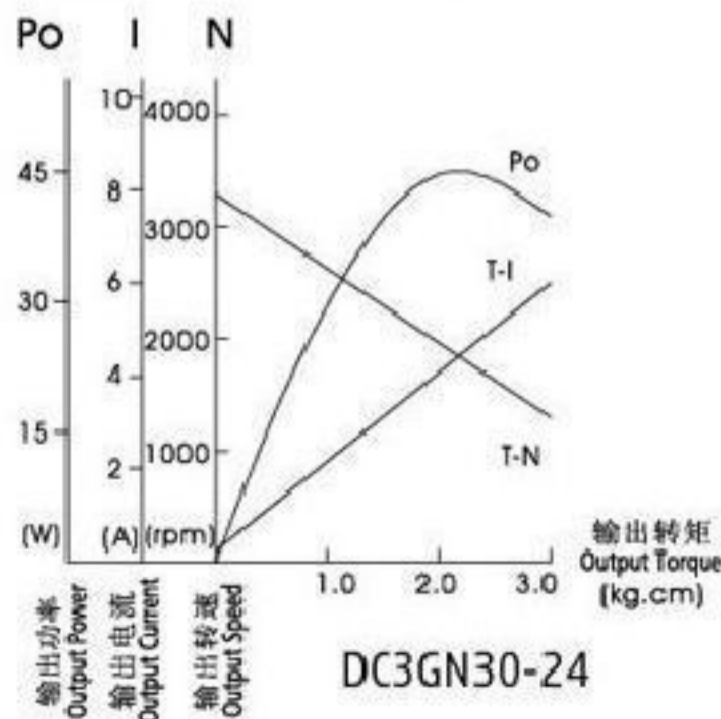
齿轮箱型式 Model of Gearbox: 2GN□K

型号 Mode	减速比 Reduction Ratio		60	75	90	100	120	150	180	200
DC3GN30-24□	输出轴转速 Output Shaft Speed	r/min	53	43	36	32	27	21	18	16
	允许力矩 Allowable Torque	N.m	4.90	4.90	4.90	4.90	4.90	4.90	4.90	4.90
		kgf.cm	50.0	50.0	50.0	50.0	50.0	50.0	50.0	50.0



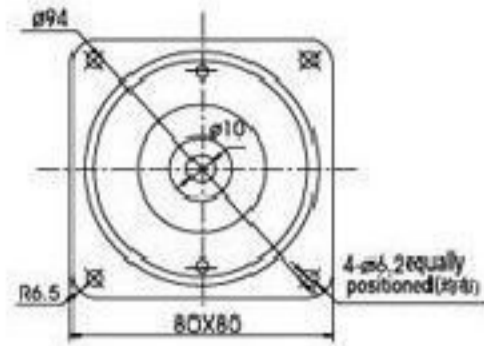
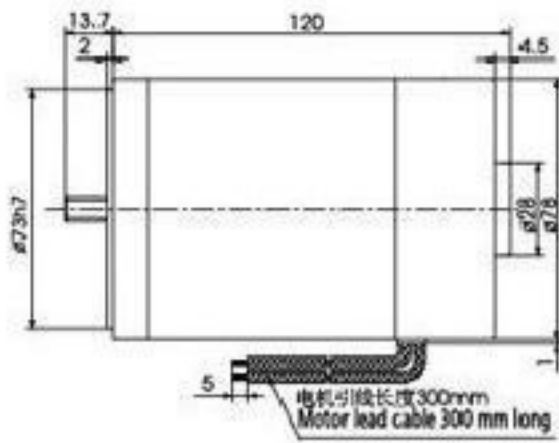
电机接线图 Wiring Diagram of Motor

电机特性曲线 Characteristic Curve of Motor



光电机出轴尺寸 Bare Motor Output Shaft Dimension

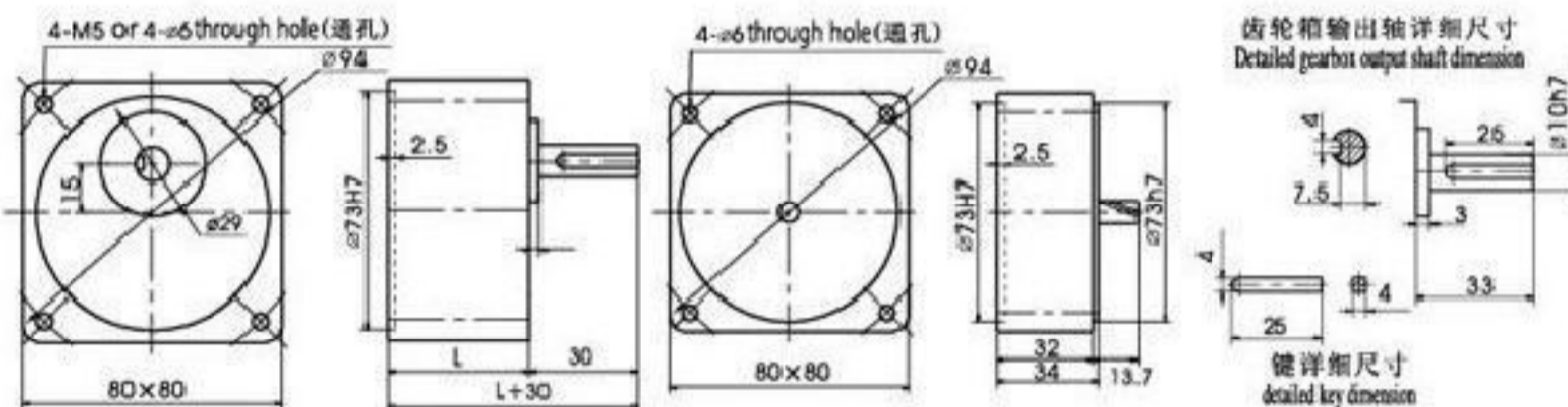
光电机 Motor	齿轴 Gear Shaft DC3GN30-□	铁扁 Flat type DC3A30-□
出轴型式 及尺寸 Output Shaft Type and Dimension		



电机特性表 List of Motor Characteristics

型号 Model	电压 Voltage V	功率 Power W	空载参数 No-load Parameters		负载参数 Load Parameters			电刷寿命 Brush Life H	电机重量 Motor Weight kg	备注 Remarks
			转速 Speed RPM	电流 Current A	转速 Speed RPM	力矩 Torque kg.cm	电流 Current A			
DC4GN25-12□	12	25	3200	1.4	3100	0.8	3.6	3000	1.7	
DC4GN25-24□	24	25	3000	0.7	2850	0.9	1.7	3000	1.7	
DC4GN25-90□	90	25	3200	0.2	3000	0.8	0.5	3000	1.7	
DC4GN40-12□	12	40	3100	2.0	2800	1.4	5.2	3000	1.8	
DC4GN40-24□	24	40	3100	0.8	3000	1.3	2.1	3000	1.8	
DC4GN40-90□	90	40	3200	0.3	3000	1.3	0.7	3000	1.8	

齿轮箱外形尺寸 Overall Dimension of Gearbox



	速比 Reduction Ratio	尺寸 L(mm)	质量 (kg)
齿轮箱 Gearbox	4GN3K-GN20K	43	0.43
	4GN25K-GN50K	45	0.57
	4GN60K-GN200K		0.61
中间齿轮箱 Intermediate Gearbox	4GN10X	32	0.43

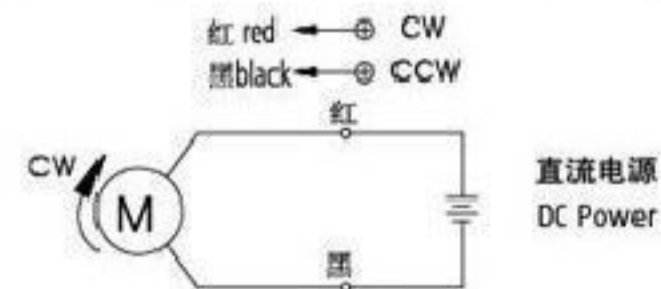
齿轮箱允许力矩 Allowable Torque on Gearbox

齿轮箱型式 Model of Gearbox: 4GN□K

型号 Model	减速比 Reduction Ratio		3	3.6	5	6	7.5	9	10	12.5	15	18	20	25	30	36	40	50	60
DC4GN40-24□	输出轴转速 Output Shaft Speed	r/min	1033	861	620	517	413	344	310	248	207	172	155	124	103	86	78	62	52
	允许力矩 Allowable Torque	N.m	0.30	0.36	0.50	0.60	0.75	0.90	1.00	1.25	1.50	1.80	2.00	2.25	2.70	3.24	3.60	4.50	4.88
		kgf.cm	3.06	3.67	5.09	6.1	7.64	9.17	10.2	12.73	15.28	18.33	20.36	22.95	27.54	33.04	36.71	45.90	49.80

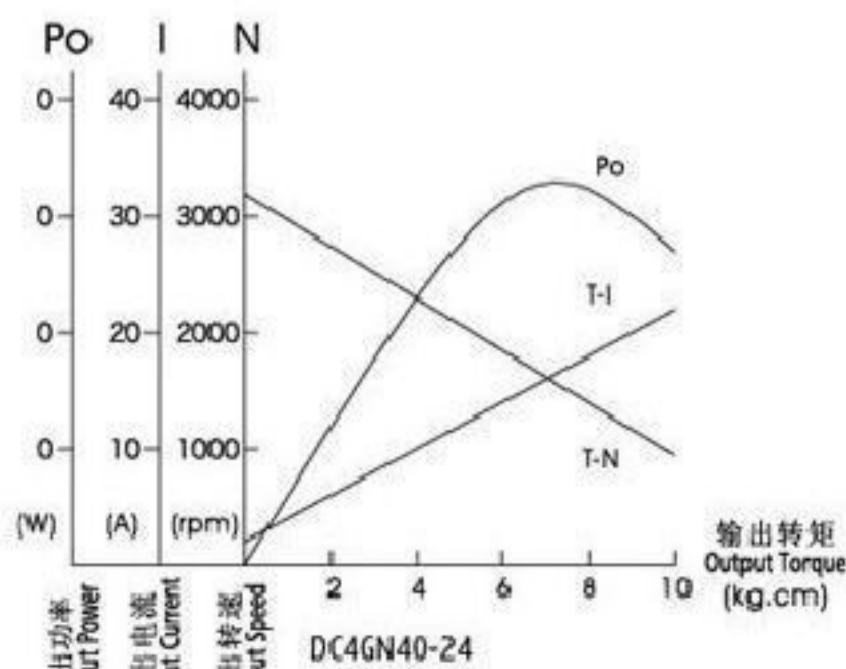
齿轮箱型式 Model of Gearbox: 4GN□K

型号 Model	减速比 Reduction Ratio		75	90	100	120	150	180	200
DC4GN40-24□	输出轴转速 Output Shaft Speed	r/min	41	34	31	26	21	17	16
	允许力矩 Allowable Torque	N.m	6.10	7.32	7.84	7.84	7.84	7.84	7.84
		kgf.cm	62.24	74.69	80.00	80.00	80.00	80.00	80.00


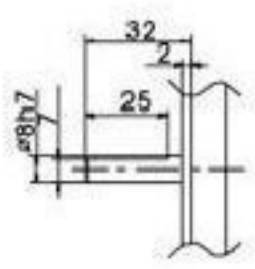


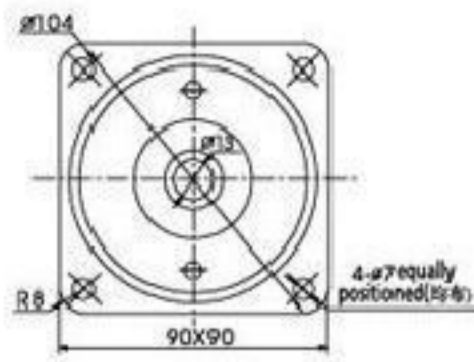
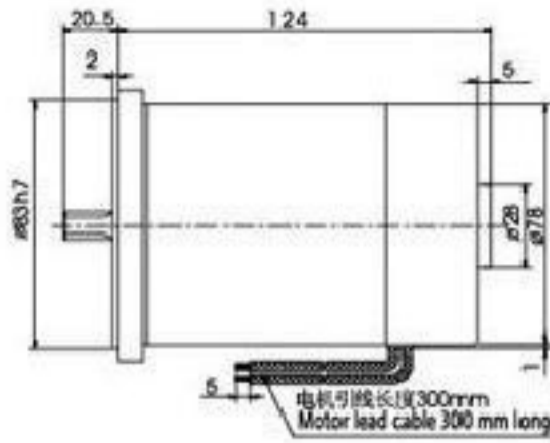
电机接线图 Wiring Diagram of Motor

电机特性曲线 Characteristic Curve of Motor



光电机出轴尺寸 Bare Motor Output Shaft Dimension

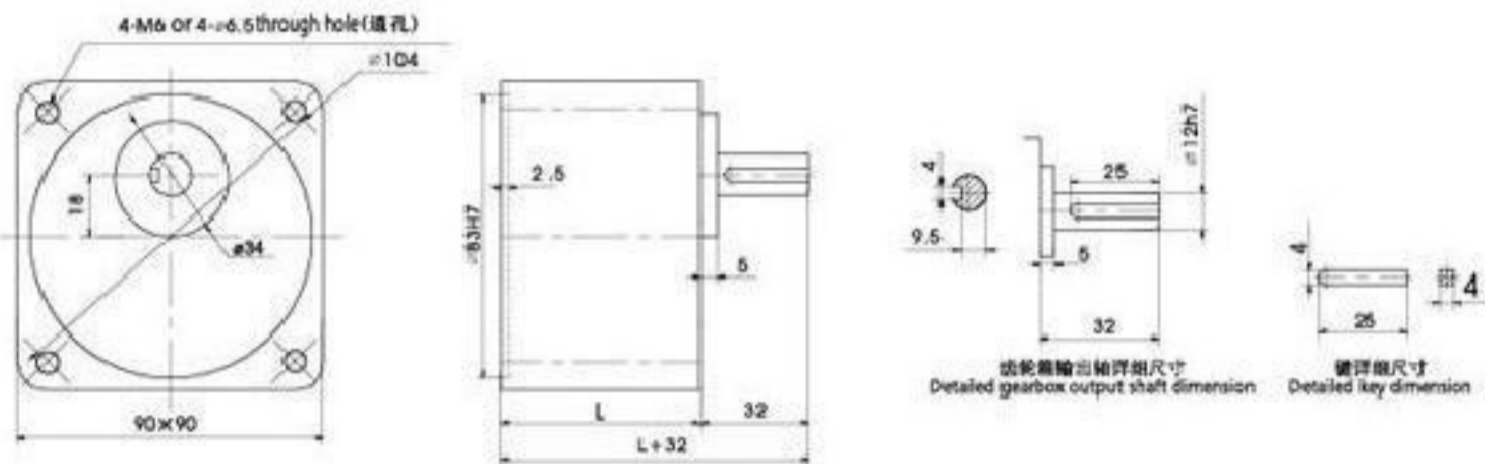
光电机 Motor	齿轴 Gear Shaft DC4GN25-□ DC4GN24D40-□	铁扁 Flat type DC4A25-□ DC4A40-□
出轴型式 及尺寸 Output Shaft Type and Dimension		



电机性能参数 Motor Performance Parameters

型号 Model	电压 Voltage V	功率 Power W	空载参数 No-load Parameters		负载参数 Load Parameters			电刷寿命 Brush Life H	电机重量 Motor Weight kg	备注 Remarks
			转速 Speed RPM	电流 Current A	转速 Speed RPM	力矩 Torque kg.cm	电流 Current A			
DC5GN40-12□	12	40	3100	2.0	2800	1.4	5.2	3000	1.9	
DC5GN40-24□	24	40	3000	0.8	2800	1.4	2.2	3000	1.9	
DC5GN40-90□	90	40	3200	0.3	3000	1.3	0.7	3000	1.9	

齿轮箱外形尺寸 Overall Dimension of Gearbox



	速比 Reduction Ratio	尺寸 L(mm)	质量 (kg)
齿轮箱 Gearbox	5GN3K-GN18K	42	0.73
	5GN20K-GN36K	65	1.03
	5GN40K-GN200K		1.13

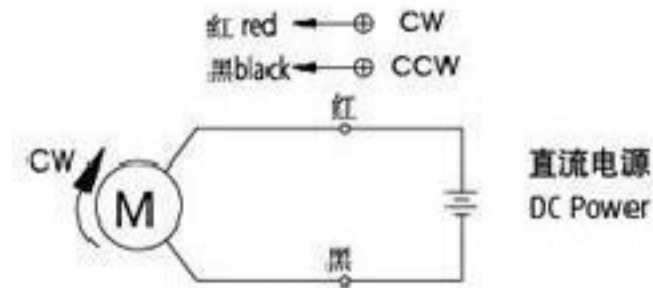
齿轮箱允许力矩 Allowable Torque on Gearbox

齿轮箱型式 Model of Gearbox: 5GN□K

频率 Frequency	减速比 Reduction Ratio																		
		3	3.6	5	6	7.5	9	10	12.5	15	18	20	25	30	36	40	50	60	
DC5GN40-24□	输出轴转速 Output Shaft Speed	r/min	1000	833	600	500	400	333	300	240	200	166	155	124	103	86	78	62	52
	允许力矩 Allowable Torque	N.m	0.31	0.37	0.62	0.62	0.77	0.93	1.03	1.29	1.55	1.86	1.86	2.32	2.79	3.35	3.36	4.20	5.04
		kgf.cm	3.20	3.80	6.30	6.30	7.90	9.50	10.50	13.20	15.80	19.00	19.00	23.71	28.46	34.15	34.30	44.23	51.45

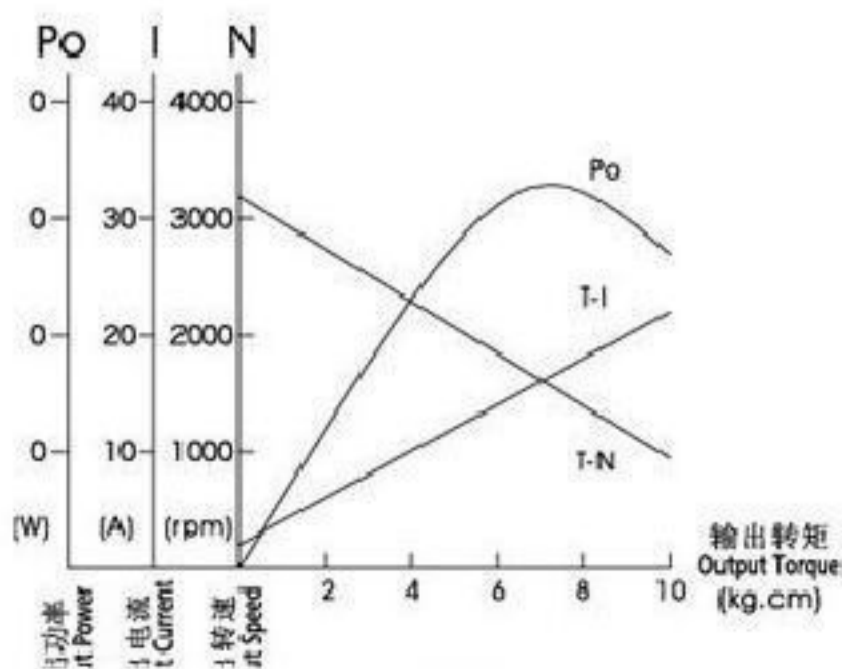
齿轮箱型式 Model of Gearbox: 5GN□K

频率 Frequency	减速比 Reduction Ratio								
		75	90	100	120	150	180	200	
DC5GN40-24□	输出轴转速 Output Shaft Speed	r/min	41	34	31	26	21	17	16
	允许力矩 Allowable Torque	N.m	6.30	7.56	8.40	9.80	9.80	9.80	9.80
		kgf.cm	64.32	77.18	85.76	100	100	100	100



电机接线图 Wiring Diagram of Motor

电机特性曲线 Characteristic Curve of Motor



光电机出轴尺寸 Bare Motor Output Shaft Dimension

光电机 Motor	齿轴 Gear Shaft DC5GN40-□	铁扁 Flat type DC5A40-□	铁键 Milling keyway DC5A140-□
出轴型式及尺寸 Output Shaft Type and Dimension			